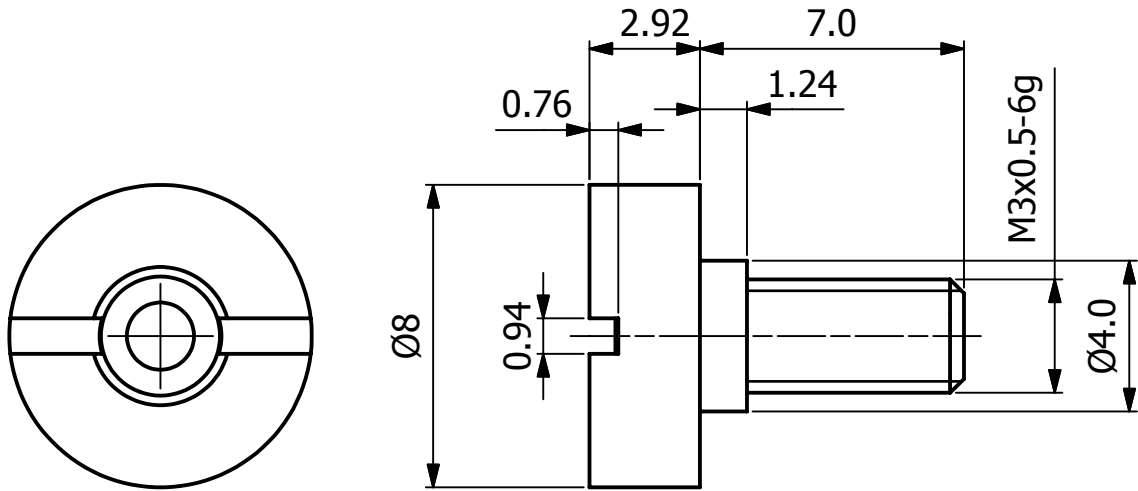


DRG No
BL/D10518 INST

USED ON -----

REMOVE ALL SHARP EDGES
 UNLESS SPECIFIED



DO NOT SCALE - ASK



NOTES :-

- 1) MATERIAL :-
 BODY - BLACK 30% GLASS FILLED NYLON 66
 FINISH : CLEAN AND FLASH FREE.
- 2) MEMBRANE : PTFE FILTER MEMBRANE ON A
 POLYPROPYLENE SUPPORT.
- 3) BREATHER WILL WITHSTAND IMMERSION IN WATER TO A DEPTH OF
 1 METRE FOR 2 HOURS WITHOUT ANY WATER INGRESS. MAXIMUM
 TEMPERATURE DIFFERENCE BETWEEN WATER AND BREATHER : 15°C.
- 4) MAXIMUM FITTING TORQUE = 0.08-0.10 N.m (THREAD CAN TWIST OR SNAP AT
 0.15-0.20N.m.)
 EXCEEDING THIS LIMIT COULD CAUSE FAILURE OF THE PRODUCT

THIS DESIGN IS THE PROPERTY OF BROWNELL LTD, AND MAY NOT BE COPIED OR REPRODUCED WITHOUT THEIR PRIOR WRITTEN PERMISSION

MATERIAL	PROTECTIVE FINISH				
SEE NOTE	NATURAL	NOTE ADDED	7093	2	12-04-19
		ORIGINAL		1	05-01-09
EST. WT. -----	THIRD ANGLE PROJECTION	CHANGE	MOD No	ISSUE	DATE
DIMS IN mm	SURFACE TEXTURE	TOLERANCES : UNLESS OTHERWISE STATED			
SCALE 5:1	3.2µm	±0.2			
 RED DOT = ORIGINAL  BLACK DOT = COPY	BROWNELL LTD LONDON NW10 7XF		DRAWN DO	CHECKED	

TITLE MINI IMMERSION BREATHER (PLASTIC)	DRAWING No. BL/D10518 INST
--	--------------------------------------