

DRG No
BL/D13677 INST

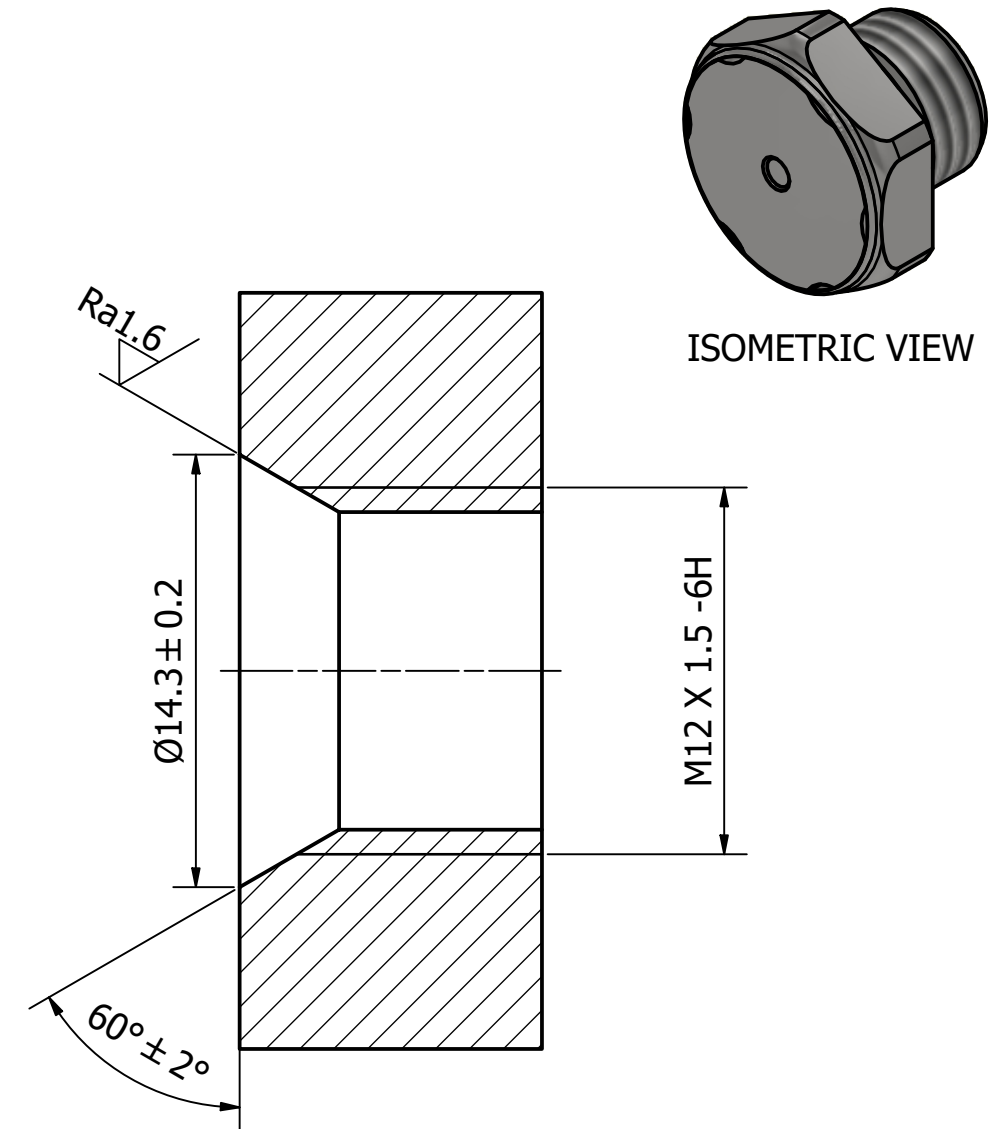
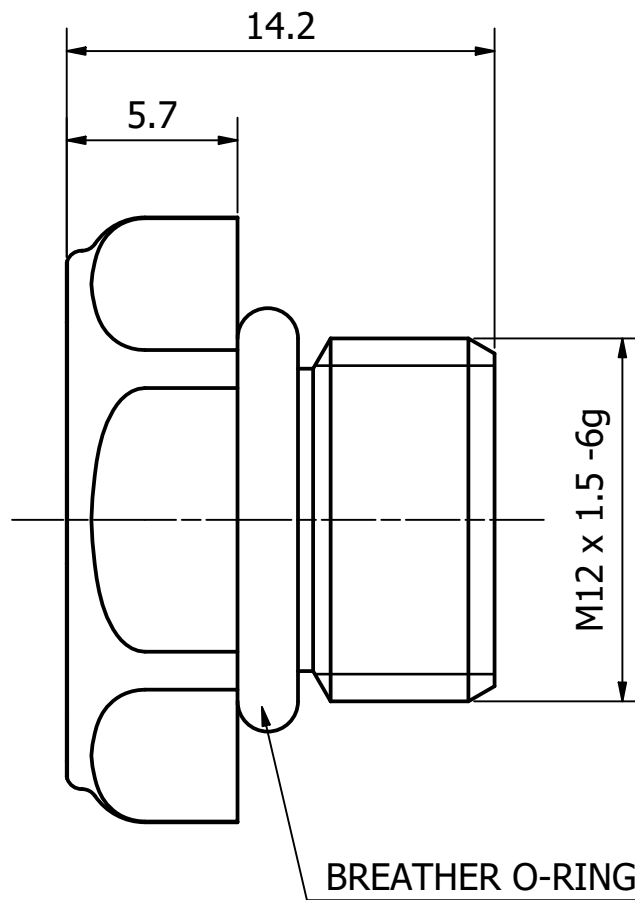
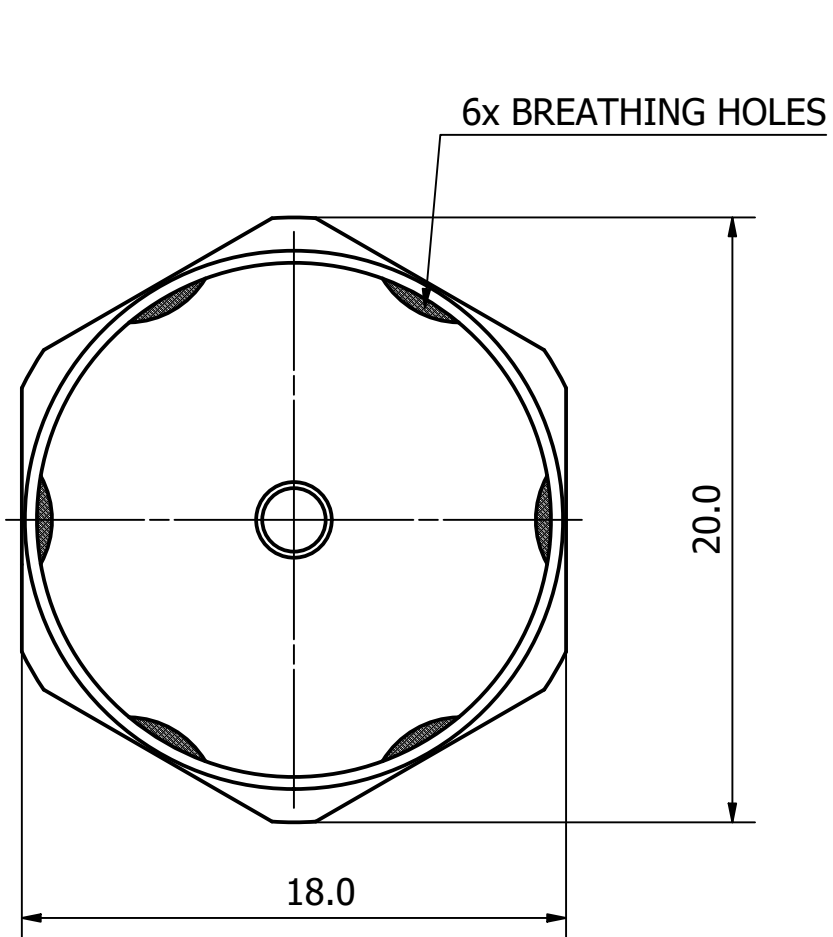
REMOVE ALL SHARP EDGES UNLESS SPECIFIED

THIRD ANGLE PROJECTION

DO NOT SCALE - ASK

USED ON -

THIS DRAWING IS THE PROPERTY OF BROWNELL LTD. AND MAY NOT BE COPIED OR REPRODUCED WITHOUT THEIR PRIOR WRITTEN PERMISSION



NOTES:

- BREATHER CONFORMS TO IEC 60529 IP68 (EXTENDED IMMERSION: 2 METRES for 1 HR).
- BREATHER FITTED WITH OLEOPHOBIC ePTFE MEMBRANE.
- BREATHER O-RING MATERIAL: SILICONE
- TYPICAL AIRFLOW: 1600 ml/min @ dP 70 mBar
- RECOMMENDED INSTALLATION TORQUE: 0.9 ± 0.3 Nm
- OPERATING TEMPERATURE RANGE: -40 - 125 °C
(CONFORMS TO IEC 60068-2-1, 60068-2-2 & 60068-2-14)
- RECOMMENDED STORAGE CONDITION: 20 - 25 °C / 30 - 50% RH, KEEP OUT OF DIRECT SUN LIGHT, PREFERABLY IN ORIGINAL PACKAGING.

MOUNTING BORE DETAILS
(SEE ADDITIONAL DETAILS NOTE 5)

CHANGE	MOD No	ISSUE	DATE
ADDITIONAL NOTES ADDED		3	04-05-22
MOUNTING DETAILS ADDED		2	21-04-22
ORIGINAL		1	07-05-21

UNLESS OTHERWISE STATED	ANGULAR DIMS ± 0.5°	LINEAR DIMS 0 = ± 0.5 0.0 = ± 0.25 0.00 = ± 0.05	BROWNELL Ltd. LONDON NW10 7XF		RED DOT=ORIGINAL	DRAWN	CHECKED
SURFACE ROUGHNESS	3.2 µm (N8)		TITLE		BLACK DOT=COPY	IC	NP
DIMENSIONS IN	mm		M12 OIL BREATHER		DRAWING NUMBER		
SCALE (ORIGINAL)	4:1				BL/D13677 INST		

MATERIAL	PROTECTIVE FINISH
316L STAINLESS STEEL	-
EST. WT.	----