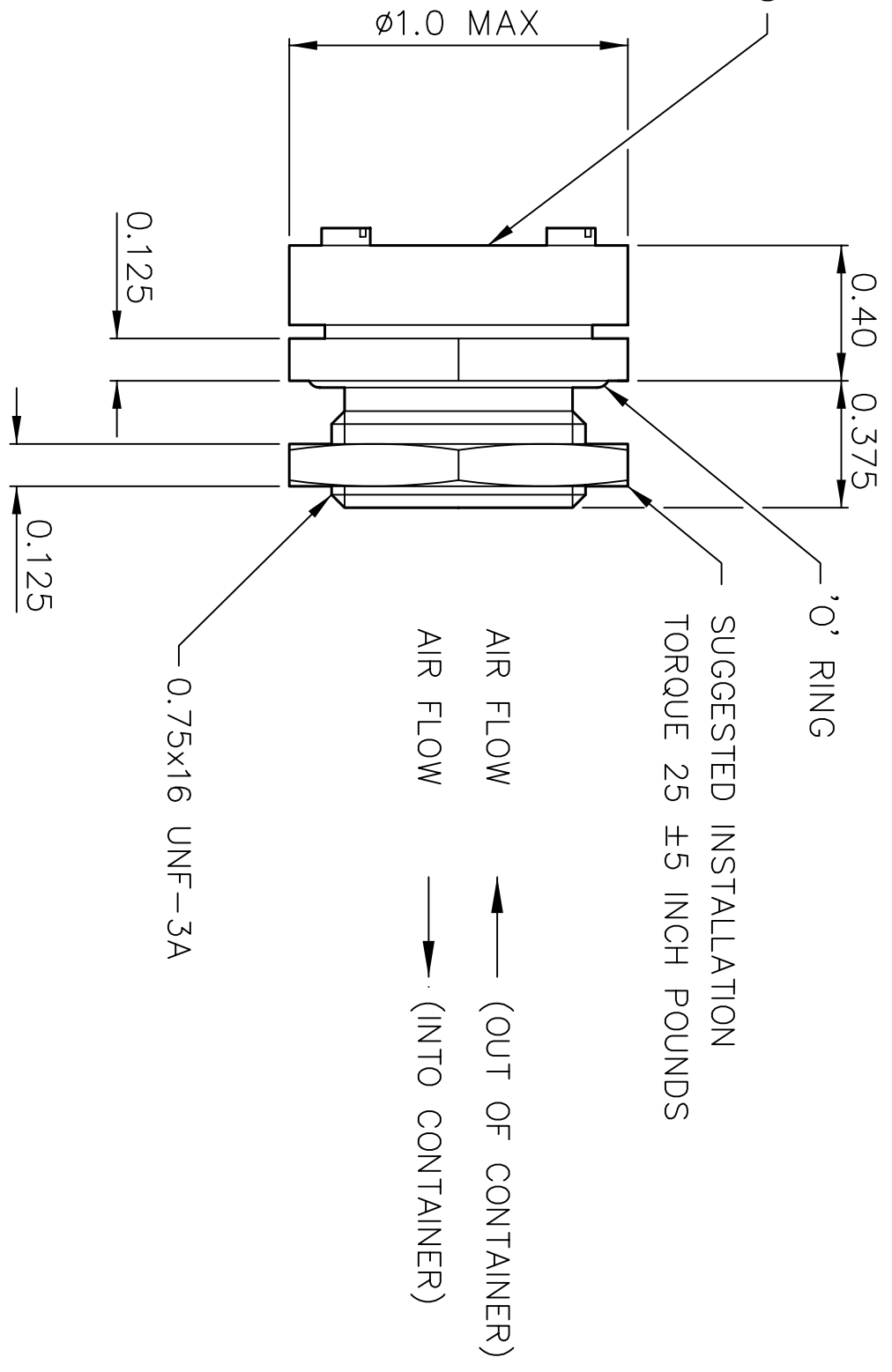
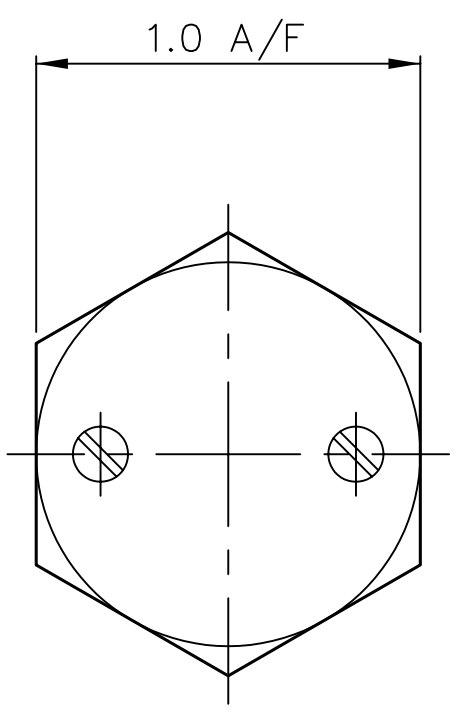
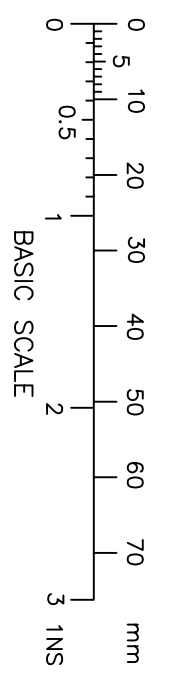


THIS DESIGN IS THE PROPERTY OF BROWNELL LTD
AND MAY NOT BE COPIED OR REPRODUCED
WITHOUT THEIR PRIOR WRITTEN PERMISSION

DRG No
BL/D 9314 INST
USED ON

THIRD ANGLE PROJECTION
REMOVE ALL SHARP EDGES UNLESS SPECIFIED
DO NOT SCALE - ASK



INWARD & OUTWARD PRESSURE	DRAWING No.
0.5 P.S.I.	BL/D9314/01
1.0 P.S.I.	BL/D9314/02
1.5 P.S.I.	BL/D9314/03
2.0 P.S.I.	BL/D9314/04
2.5 P.S.I.	BL/D9314/05
3.0 P.S.I.	BL/D9314/06

MATERIAL	PROTECTIVE FINISH	TOLERANCES UNLESS STATED	±0.020
ALUM ALLOY	SPLASH GUARD - ANODISE BLACK/ HOUSING - ALOCHROM	DIMNS IN INS/####	SCALE (ORIGINAL) 2 : 1
EST. WT. —			

TITLE
BROWNELL LTD LONDON NW10
VALVE, BREATHER,
TWO-WAY RELIEF
(RF SCREENED)

CHANGE	MOD No	ISSUE	DATE
ORIGINAL		1	16-02-04
	6175	2	22-11-05

DRAWING No
BL/D 9314/01-05 INST

RED DOT = ORIGINAL
BLACK DOT = COPY

DRAWN **PK**
CHECKED