

NEW FROM AGM

NOW YOU CAN RECONFIGURE SHIP STOWAGE AREAS



Installation shown is comparable in cost to current conventional installation methods.

FROM THIS
←
TO THIS
→
IN MINUTES!
AND
WITHOUT
TOOLS!



Cost of reconfiguration is less than 2 man hours. Conventional reconfiguration cost would be more than original installation.

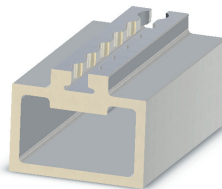
Introducing the New "Quick-Adjust" KevLok® Tie Down Shelving Brackets

PATENT PENDING

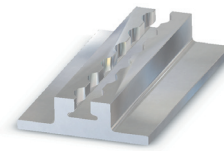


These rugged brackets easily secure the KevLok Tie Down Shelving and attach to vertical ISO track with easy hand-operable locking mechanisms.

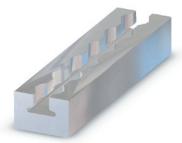
Three different cross sections of track are available in lengths up to 72".



Box Beam



Winged



Flat Track

Shelving available in lengths of 24" to 144" and in widths of 12" or 18". Brackets available in either 12" x 12" or 12" x 18" configurations and can be adjusted vertically in 1" increments so that shelving can be placed as close as 12" to each other or above the deck.

Tie downs available as quick-disconnect loop straps with ratchet fasteners or as quick-disconnect KevLok fastener straps with quarter-turn track end-fittings.

Installation as shown (with box beam track) has passed Mil-S-901D Medium Duty "Hammer Test."



FOR MORE INFORMATION CONTACT:

AGM Container Controls, Inc. • 3526 E. Ft. Lowell Rd. • Tucson, AZ 85716
Toll Free: 800-995-5590 • Tel: (520) 881-2130 • Fax: (520) 881-4983
sales@agmcontainer.com • www.agmcontainer.com

Form 7.2.48